



# Blumer Lehmann

English edition





# Today yesterday tomorrow

Wood can rise to every  
challenge the future brings





# Multi-talented wood

With its huge range of possibilities, wood holds solutions for challenges such as climate change, the energy transition and and growing demand for raw materials. Wood is the ideal material for future-proof ideas, sustainable construction design and eco-friendly energy.

### sustainable

The sustainable forest management practised in our woods takes a wide range of requirements into account. These include conserving wildlife and biodiversity, protecting people and animals from the forces of nature, providing rest and relaxation, and use as a raw material. Viewing wood as a valuable raw material from our forests is very important to us. This is the only way we can preserve forests for future generations and make good commercial use of forested areas.

### worthwhile

What's the plan for the buildings of the future? First and foremost, it's about low consumption of energy and resources. This is supported by future-proof construction approaches such as cradle to cradle, design for disassembly, ReUse, circular economy, and more. Because worthwhile construction incorporates changing usage requirements from the very start. By selecting resource-conserving materials and flexible structures, the entire service life of a building is considered – and even the period afterwards.

## natural

Wood is a renewable resource and so performs particularly well in terms of sustainable energy. In delivering clean, environmentally friendly energy, wood helps replace fossil fuels and provides carbon-neutral heating in a natural cycle.

### beneficial

Choosing wood as a building material can convey certain values and demonstrate a specific approach to living. Yet this material can also do a lot more. Wood enhances wellbeing where people work, learn and live. In the interiors of schools, office buildings or at home, wood relieves stress and has a calming and beneficial effect on both body and mind.

### inspiring

Wood is an innovative material and is constantly reaching new heights. The latest developments in fire protection and sound insulation, and the application of these new technologies in timber construction is enabling previously impossible heights, volumes and complexities to be achieved. By combining established timber construction expertise and skilled trades with digital planning, production and construction processes, ideas know no bounds.

## urban

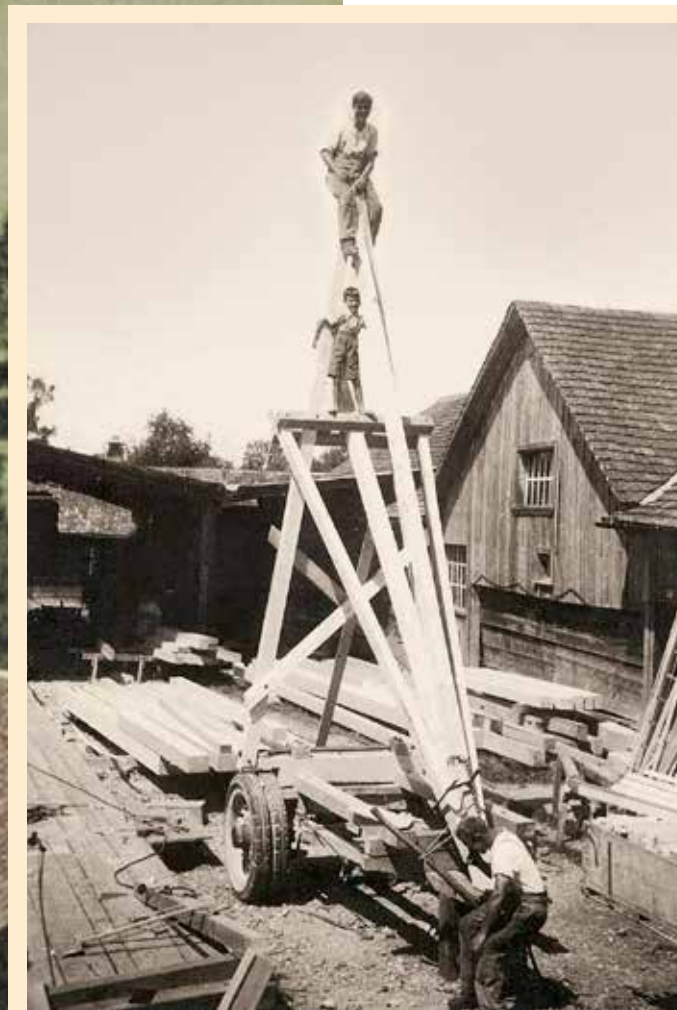
Scarcity of resources, climate change and urbanisation require us to think differently. Innovative approaches to construction that make clever and energy-efficient use of the available space are increasing the appeal of timber as a material for urban buildings. Additional storeys in timber construction, modular timber lofts that fill gaps between buildings in city centres or sustainable timber hybrid buildings are just a few examples.





# The fascination of wood since 1875

What drives us is still what excited and motivated our founders. We have had a close relationship with timber since 1875, and we put vision into practice by opening up new dimensions for this versatile and vibrant material.



Our timber products and structures have already been inspiring our customers for generations.

In-depth expertise, creative solutions, trusting collaborations, dedicated employees and tradition in action all add to our recipe for success. It's how we create the innovative construction projects and timber products at our sites in Switzerland, Germany and Luxembourg. Not least thanks to the pioneering spirit of the original sawmill at Erlenhof.

Since the very beginning, we have sought out new applications and future-proof methods to process every part of the wood we use. This has made us a leading specialist in the timber industry, in timber construction and in silo construction. Our collaborations with well-known architecture studios at home and abroad and their bold timber designs have spread our reputation around the world. This also brings with it an obligation. We meet this obligation through our expertise in all things timber, our strong performance and high attention to quality as well as with the courage to constantly push the limits of what is possible. Like our forebears, we understand the fascination of wood. With this versatile and vibrant material, our timber concepts continue to flourish and we are able to bring visions to life.



“We unlock timber’s potential. Because everything we do is driven by a fascination for our material and the innovation happening along the entire timber value chain.”

Katharina Lehmann, Blumer Lehmann CEO and proprietor



# So there's enough to go round in the future

**Sustainability** – for us, this means that we remain equally mindful of economic, social and environmental criteria in all the decisions we make. In doing so, we create lasting values and outlooks for the future.

## Socially sustainable

We recognise and appreciate our employees as the foundation of our success. As part of this, we train around 30 apprentices each year in four different skilled trades. With our support, around 450 employees are able to build and expand their expertise and tap into their full potential. This variety is also reflected in our social outreach work. We support worthwhile projects working for the good of society, in particular in education, culture and sport.

We put sustainability into action, in everything we do

Wood is already sustainable in itself – but this isn't enough for us. We set clear sustainability targets across our entire value chain. We strive for sustainability in all aspects of what we do.

## Ecologically sustainable

We process every part of the wood, in order to maximise the yield of useful material. Anything we can't use as a material, we process into carbon-neutral, ecological fuel. Thanks to our own biomass power plant, our work at Erlenhof is largely self-sufficient in terms of energy and carbon neutral. On our company premises and construction sites at home and abroad, we aim to use environmentally friendly, resource-conserving and climate-neutral products, equipment and means of transport.

## Economically sustainable

We are always guided by the requirements of our customers and strive to achieve excellence. We aim to create values that will stand the test of time by striking a balance between guaranteeing security and embracing opportunity. To this end, we foster a corporate culture with space for personal initiative, creativity and responsible action.



# Everything goes full circle here

As far as possible, we work in closed cycles that generate minimal waste and reduce transportation. In this way, all our divisions contribute to the timber value chain. And as part of a whole, add up to more than the sum of their parts.

## 1 Swiss wood

In the sawmill, where forest intersects with the construction and energy industries, our experts process predominantly local Swiss wood sourced from within a 100km radius. We use modern, high-performance facilities to create sawn timber as well as planned, finger-jointed or profiled timber products. New and innovative products are constantly being added to our wide-ranging portfolio, which delivers the foundations for our customers' building projects and our own timber construction work.

## 3 Worthwhile building culture

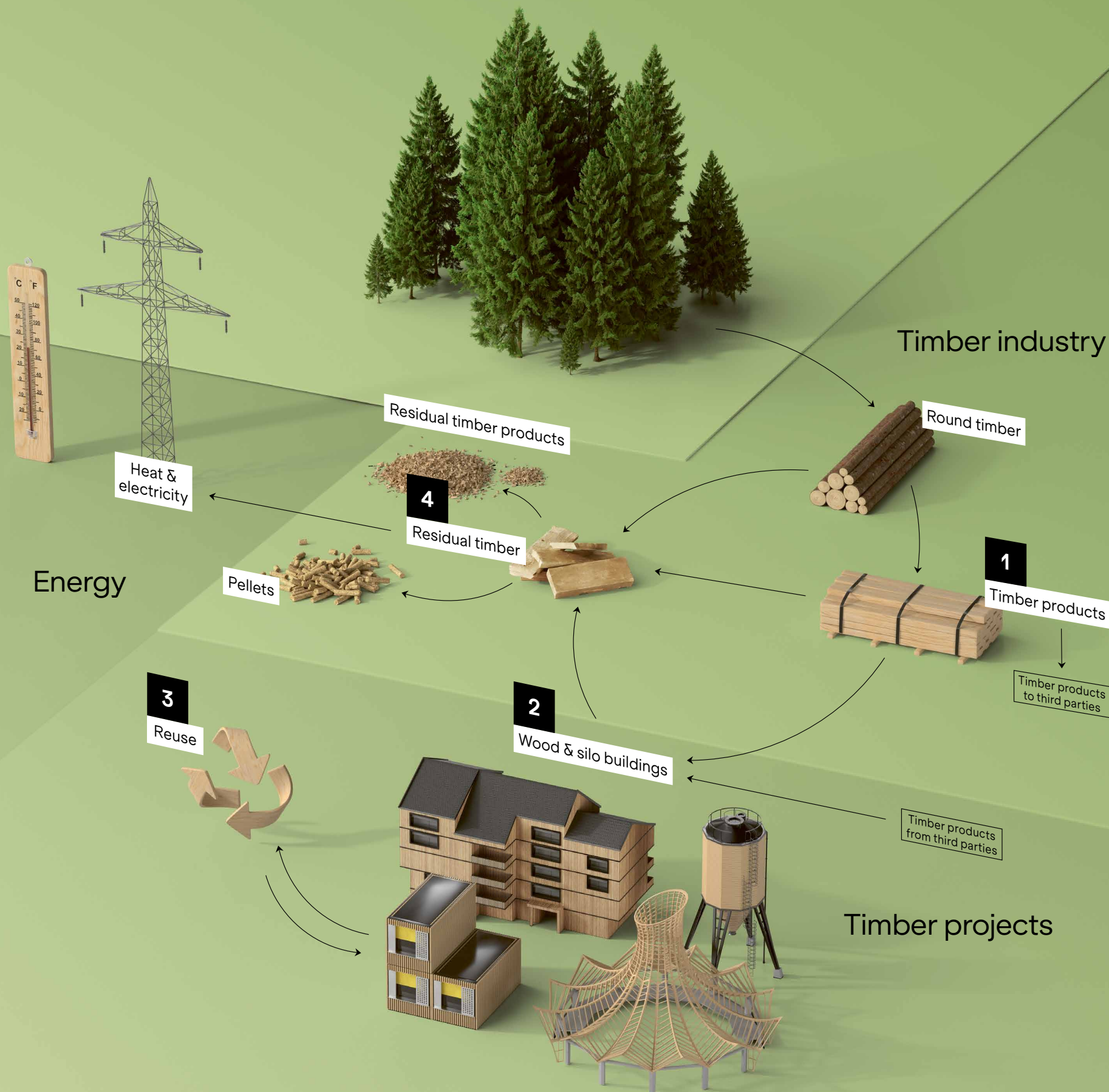
Our aim is to achieve net zero in the services we provide. Building with timber helps us in this as it absorbs carbon from the atmosphere and locks it away. A local value chain and our responsible working methods also do their bit. We also invest in worthwhile business models. Our modular structures, for example, adhere to ReUse principles as they can be rebuilt time and again in new locations, for different usages and in various arrangements.

## 2 Versatile timber and silo structures

Whether permanent, temporary, Free Form or prefabricated in elements and modules, our project teams create innovation in timber and silo construction. And with our team of Architects, draughtsperson's, project managers, and timber engineers: a wide range of skills and plenty of finesse are put to good use. With the help of cutting-edge planning tools and production facilities, we create structures that meet the most stringent of requirements – in structural physics, aesthetics, quality of living and sustainability.

## 4 Complete utilisation

We utilise any residual timber that arises from our operations in full. We produce heat, energy, pellets and litter for small animals from it. At the Erlenhof we are also proud to be an example of how our waste material can be used in place of fossil fuels: the thermal energy we produce heats our own production facility, while the electricity generated supplies around 1,500 homes with energy.



## Verified commitment

The sustainable use of wood, climate protection, high-quality products and processes, the safety of our employees at work and the way we train our apprentices are all very important to us. This is why we hold various labels and certifications to verify our commitment.





# Championing visions together

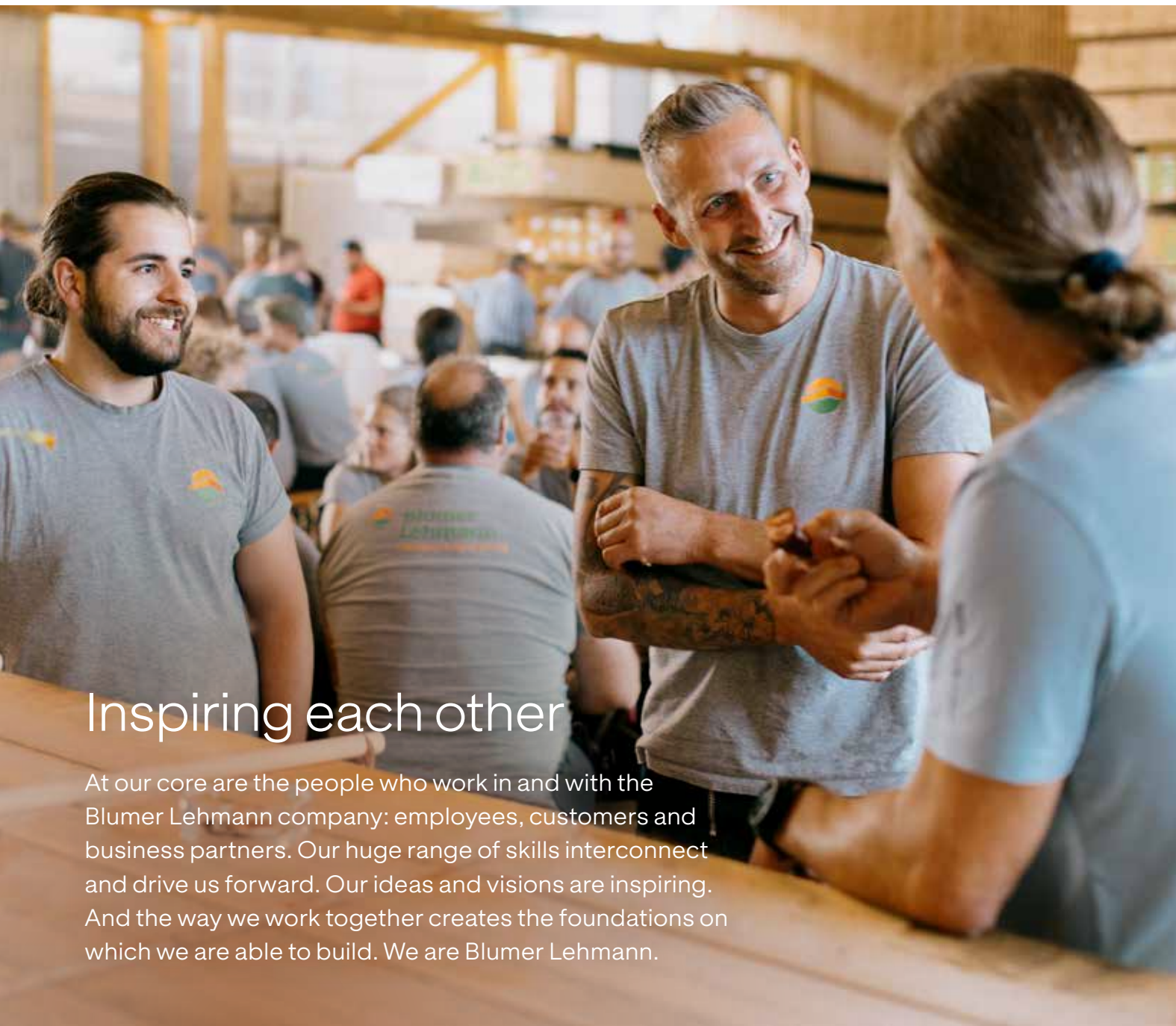
Because we are inspired  
by ideas made with timber





# We are Blumer Lehmann

**The people at Blumer Lehmann – with all their different strengths and abilities – are what make this company and allow us to forge ahead with our work. We achieve our goals together.**



## Inspiring each other

At our core are the people who work in and with the Blumer Lehmann company: employees, customers and business partners. Our huge range of skills interconnect and drive us forward. Our ideas and visions are inspiring. And the way we work together creates the foundations on which we are able to build. We are Blumer Lehmann.

## Our values

We put our values into action so we can all give our best and are able to grow alongside the company. In our day-to-day work, we foster a trusting, appreciative environment where we accept each other – where humour and an inclusive error and feedback culture are well established.

### AMBITIOUS

We are fascinated, purposeful, motivated and passionate.

### CURIOUS

We are open to new experiences and keep learning every day.

### HUMAN

We are appreciative, respectful, trusting, connected, warm and authentic.

### AWARE

We are responsible, accountable, reliable and caring.

### ENTREPRENEURIAL

We are skilled, forward looking, innovative and use oriented.



## Successful together

Irrespective of our roles, duties and responsibilities, everyone at Blumer Lehmann has something in common: a passion for timber. It motivates us to push the boundaries and achieve the extraordinary. Not just that: we put our fascination with wood into action, laying the foundations for our personal development as well as the success of our company.

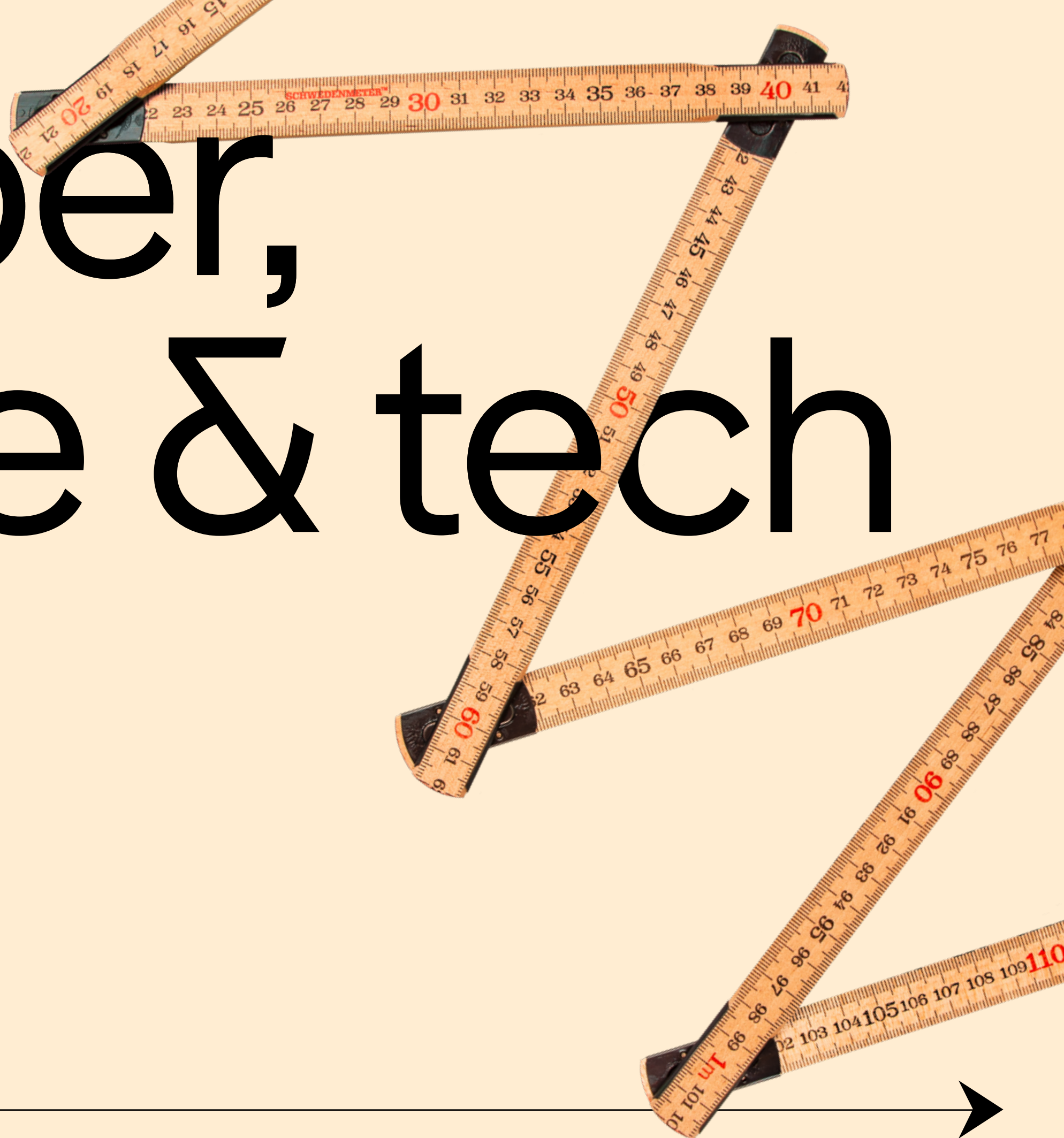
## Strong together

In our collaborations, we bring different expertise together and complement each other in knowledge, experience and skill. This allows us to see things from a range of perspectives. We scrutinise everything and are always optimising our processes, products and services. In doing so, we unlock the potential that is used to shape the future together.



# Timber, trade & tech

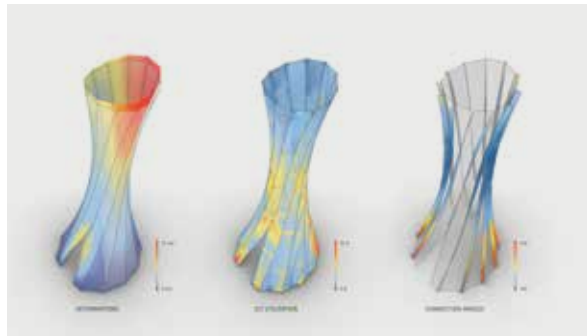
Timber construction,  
innovated





# We make timber high-tech

We love exploring new possibilities and turning timber to previously unfamiliar uses. Parametric planning, enhanced materials and refined ways of handling them allow us to push the limits of what is possible.



Known principles put to new use: when moist wood dries, it contracts more perpendicular to the grain than parallel to the grain. This is how the Urbach Tower all but bent itself into its curved shape.

## New wood

The inherent potential in what is arguably the oldest yet also the most modern building material is far from being exhausted. Wood can be developed into new wood-based materials that combine established properties with new features, thereby opening up unimagined opportunities. At the same time, enhanced construction designs and methods deliver surprising results or projects – such as the self-forming tower in Urbach.

## Digital tools

Parametric planning and programming allow ideas to take off. They enable flexible planning, high-precision production and complex construction. Not just that: the direct link between a CAD-designed building and computer-aided CAM production leads to exacting components that fit together flawlessly. We use BIM – another digital milestone – in our collaborative work to bring everyone working on a project together in one shared three-dimensional model.

© ICD/ITKE

© Morley von Sternberg







# We process wood, big style

**Cutting-edge production facilities and formidable storage capacities make industrial timber processing possible. We always have the right standard products available and can produce custom-built products quickly, precisely and in large volumes.**

## Powerful production

Everything fits together here: every processing stage in our industrial timber plant is geared towards the following stage. At the heart of this are efficient saw lines, sawn timber sorting facilities, drying systems, planing and finger-jointing lines as well as residual timber processing. And, of course, highly skilled craftspeople. With all this, we produce our wide standard range, custom-built timber products and sustainable energy sources – in the exact amounts and qualities required.

← Huge capacity: our warehouse ensures our timber products are always available.

↴ Efficient production: we use cutting-edge industrial facilities to create our wide range of timber products.

↓ Wide range: we deliver standard products in different qualities, lengths and thicknesses from stock, and bespoke dimensions to order.

## Smart storage

We have a place for everything. And our intelligent high-bay warehouse can even think for itself. Large-scale and partly underground storage options optimise logistics between the sawmill and downstream processing systems. They also ensure that our wide range of products can be accessed and delivered quickly at any time.





# Knowing how it works

Our formula for successfully implementing projects is efficient planning, sophisticated processes and highly optimised and automated production. We thus implement projects of the highest quality and precision that astonish and inspire.

## Expertise & planning

Our experts in timber and silo construction planning have the digital skills but also an eye for the bigger picture as well as finer details. They use cutting-edge planning methods on a 3D model in CAD to tackle technical, organisational and logistical challenges in projects.

## Logistics & solutions

Know how! This is especially true for logistics and assembly. Our aim is to generate low amounts of embodied energy by using the shortest transport routes possible. This also involves a sophisticated approach to assembly on the construction site, using solution-focused thinking and highly skilled tradespeople. Flexibility and safety are also part of this.

## Experience & network

We work in Switzerland and around the world – always on the ground where our customers' projects are being built. Our well-practised and highly qualified project teams put their experience and our wide-spread partner network to good use at home and abroad. They approach structural challenges and cultural differences with openness and far-reaching expertise. This allows us to complete projects reliably and to the highest quality standards.

↓ Our project managers in timber and silo construction are responsible for planning and implementing complex structures.

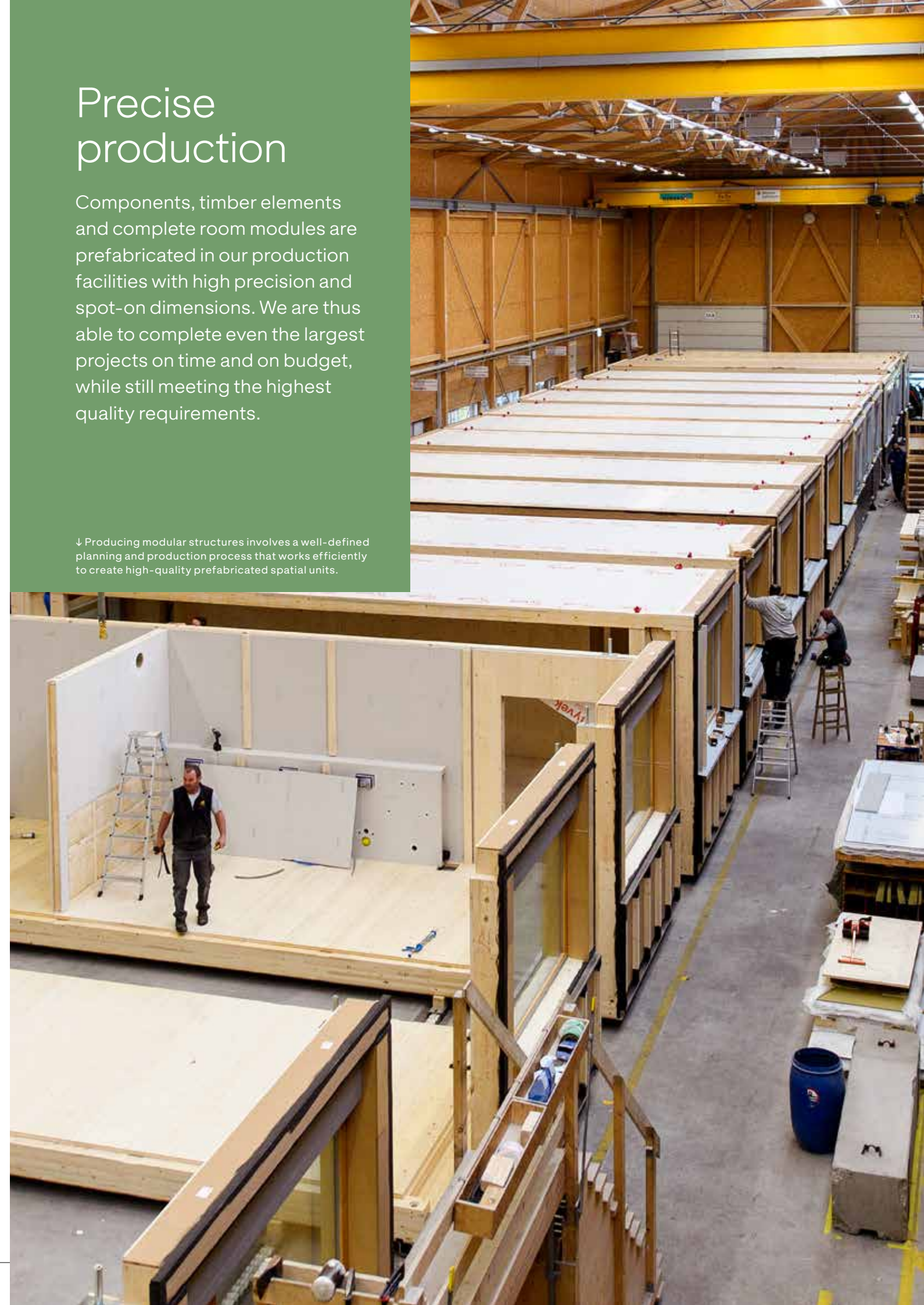
↓ A high level of prefabrication means modular structures can be erected very quickly on the building site.



## Precise production

Components, timber elements and complete room modules are prefabricated in our production facilities with high precision and spot-on dimensions. We are thus able to complete even the largest projects on time and on budget, while still meeting the highest quality requirements.

↓ Producing modular structures involves a well-defined planning and production process that works efficiently to create high-quality prefabricated spatial units.





# Products Services Fascination



In astonishing  
variety





# Timber in all its facets

Whether it’s an extraordinary timber construction project, sustainable energy supply concept, innovative timber product or silo facility made to last: we unite expertise with passion.



## Timber industry

Our industrial timber division creates our comprehensive range of timber products. We process all parts of the residual timber into litter for small animals, pellets or as fuel for heat and energy.



OUR PRODUCTS
Balcony and terrace railings
Timber for construction and industrial engineering
Floor strips
Facades and facade cladding
Planed and profiled products
Finger-jointed slats
Laminated timber
Profiled boards
Rough-planed timber
Raw lumber
Full range of slats
Packaging wood
Pellets, litter for small animals

OUR SERVICES
Technical consultation and planning
Warehousing and logistics
Surface treatments as required

## Silo and facilities construction

Our silos and facilities deliver bespoke solutions for any gritting materials or bulk solids, in particular for winter road services – from low-volume municipal silos to fully automated winter services hubs as an all-in-one solution.



↑ The brine facility in Mainz with sophisticated equipment: the Quanto 24 we developed in-house mixes the brine solution, while a central unit controls and monitors the facility at the push of a button.

→ Europe's largest modular silo facility in Chur, with cutting-edge technology. It features five silos with a total capacity of 2,300 m³ of salt and a brine facility holding 80,000 litres of ready-to-use brine.

OUR PRODUCTS AND SERVICES
Timber silos from 5 m³ to 1,000 m³ for various gritting materials
Mobile timber silos for town and municipal systems
Modular silos with custom designs
Grit storage depots and large-scale salt stores
Brine facilities, producers and technology
High-performance conveyor systems
Glass-reinforced plastic silos (GRP silos) from 30 m³ to 250 m³
Cutting-edge controls, automation and data processing
Precise measuring and weighing systems
Service and maintenance as well as renovation and modernisation of silos and brine facilities



## Timber construction

Whether it is technically and aesthetically inspiring free form structures, or highly prefabricated modular structures, or custom planned timber structures of any size – we design the future and create tactile and comfortable spaces.



OUR SERVICES
Drawing up static and structural timber construction concepts for the acquisition or execution phases
Client advice
Preparation of tender documentation
Production and assembly of timber structures
Project management and technical planning of timber structures, including coordination of the specialist planners and partners involved in the construction
Coordination of subcontractors
On request: our services in an all-in-one package as GC or FSC

↑ A spectacular Free Form timber structure with healing architecture is found in Maggie's in Leeds. This cancer support centre consists of three nested timber pavilions with accessible hanging gardens.

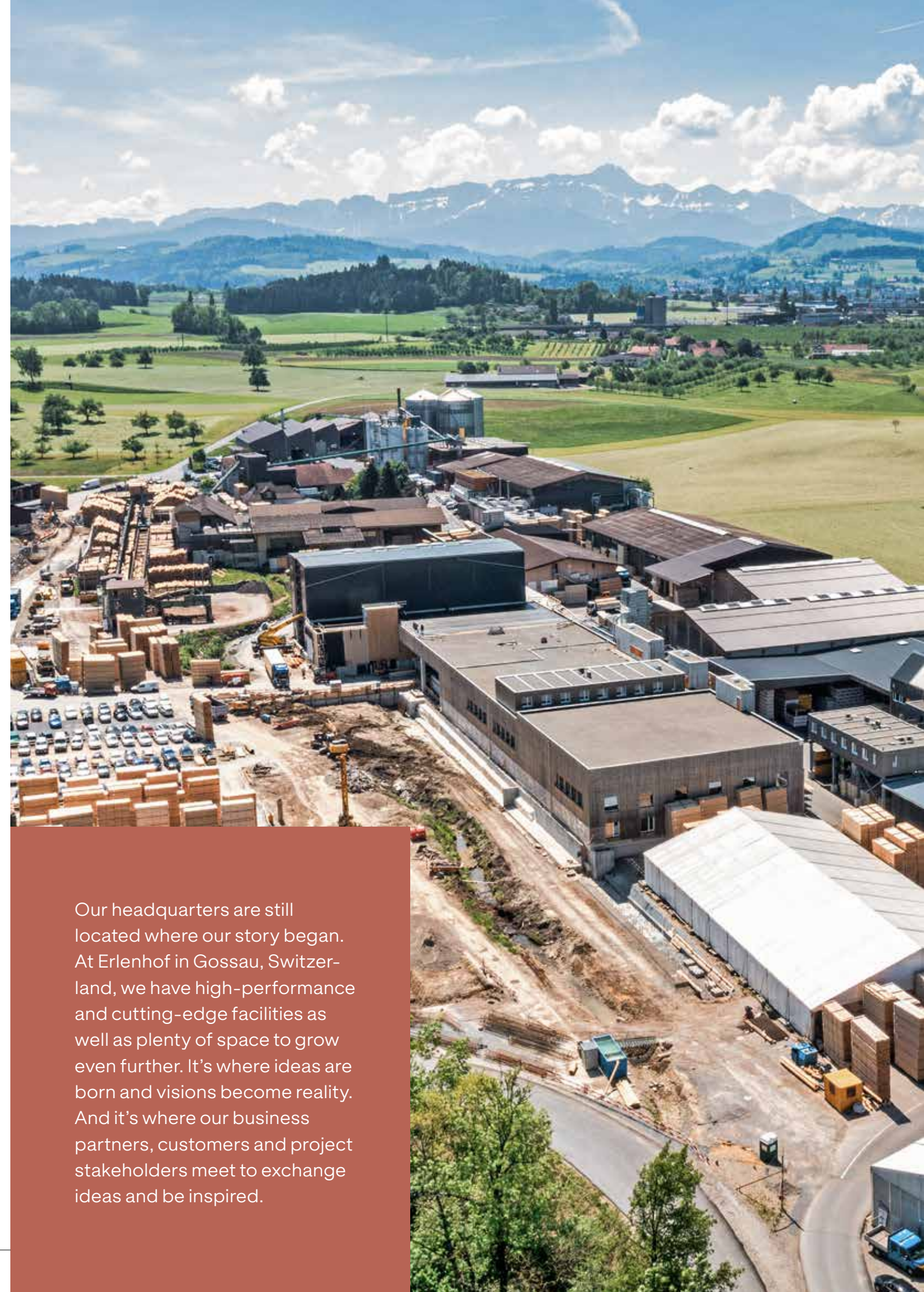
← Compact living in Herisau embodies a future-proof approach to living. This three-storey building featuring micro-apartments with one or two rooms delivers compact quality living in a sustainable modular timber structure.





# Locations – from Gossau all around the globe

Our specialists now offer their expertise at a range of locations in Europe. It is important to us to nurture relationships with our customers and invest in the sustainable growth of our company.





Timber is what drives us.

Become part  
of our mission!