

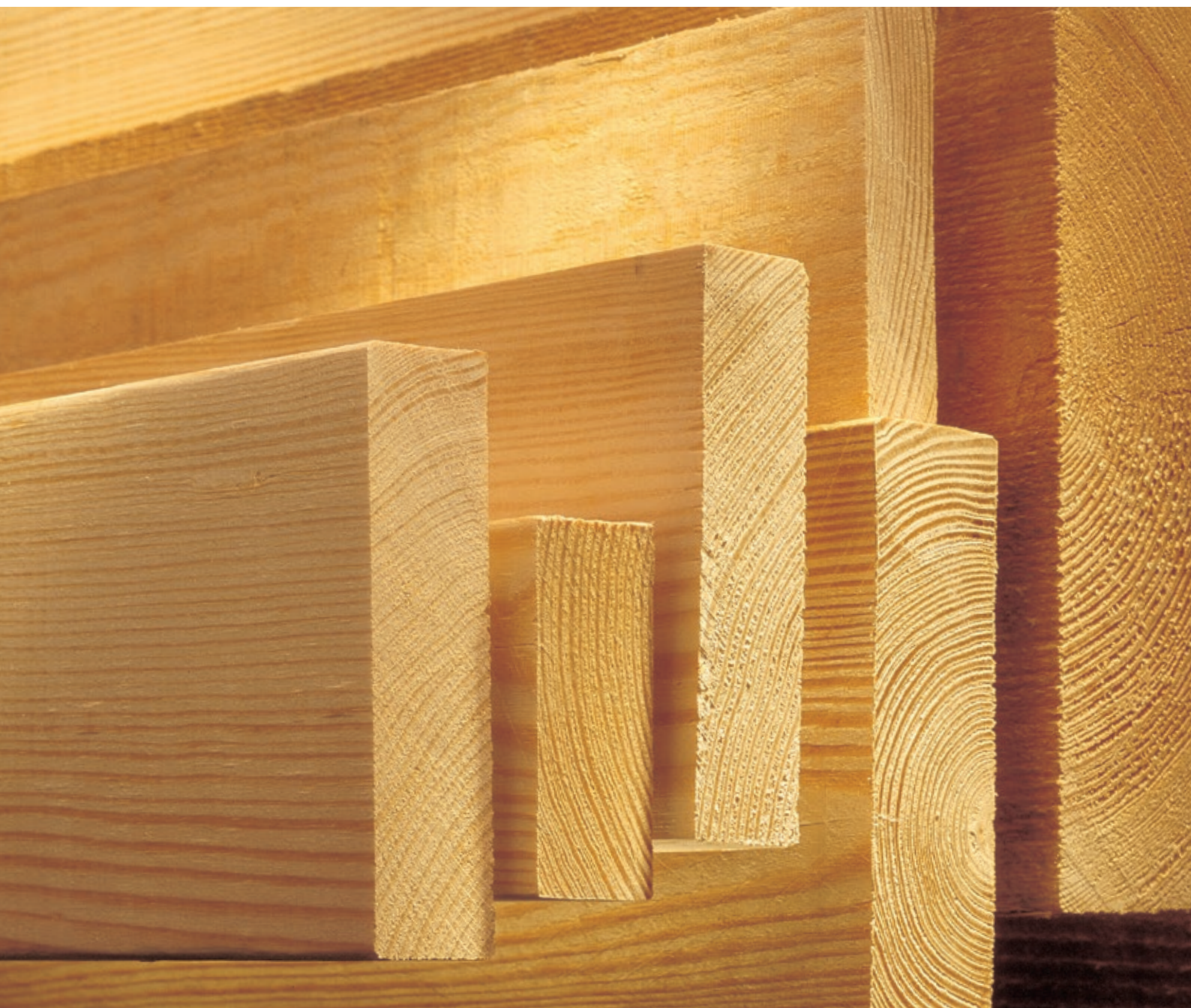


SOUTHERN YELLOW PINE EXPORT GRADES

SUSTAINABILITY—STRENGTH—VERSATILITY



AmericanSoftwoods.com
SouthernPineGlobal.com



CONTENTS

3	Southern Yellow Pine
4	Grades
5	Kiln-drying assures dimensional stability
6	Dressed No.1
7	Dressed No.2
8	Dressed No.3
9	Dressed No.4 (Economy)
10	Rough Sawn Saps
11	Rough Sawn Prime
12	Rough Sawn Merchantable
13	Rough Sawn No.2
14	Boards
15	Radius Edge Decking (R.E.D.)

USING THIS BOOKLET

This publication includes photographs of Southern Yellow Pine, illustrating a range of typical grades. The samples shown are representative of mill production practices. The primary characteristics of each grade are defined, along with the typical applications.

This publication is not a grading manual. It is intended as a guide for buyers, users and specifiers to help identify the grade of Southern Yellow Pine that best meets their requirements.

Production practices vary from mill to mill. Manufacturers of rough, kiln dried Southern Yellow Pine for export can produce to different specifications depending on the specific needs of a customer or the intended application.



The Southern Forest Products Association (SFPA) represents Southern Yellow Pine around the globe, managing a comprehensive marketing programme. Under the American Softwoods (AMSO) banner, SFPA joins with other marketing partners to promote all U.S. softwood species in export markets.

The SFPA does not grade or test timber. The information in this publication is from the Standard Grading Rules for Southern Pine Lumber, 2014 Edition, and the Export Grading Rules, 1982 Edition, both published by the Southern Pine Inspection Bureau (SPIB).

The conditions under which timber is used in construction and the quality of workmanship may vary widely. Neither the SFPA nor its members have knowledge of the quality of the workmanship or construction methods used on any construction project, and accordingly, do not warrant the design or performance of the timber in completed structures.

For more information visit AmericanSoftwoods.com

Southern Forest Products Association
6660 Riverside Drive, Suite 212 Metairie, LA 70003 USA
SouthernPineGlobal.com
e-mail: mail@sfpa.org

SOUTHERN YELLOW PINE

The name Southern Yellow Pine represents a group of four principal species of pine: longleaf, shortleaf, loblolly, and slash, that grow in a wide belt from East Texas to Virginia. Timber from all four species is marketed as Southern Yellow Pine and graded in accordance with the grading rules of the Southern Pine Inspection Bureau (SPIB), approved by the American Softwood Lumber Standards Committee.

The natural characteristics that distinguish Southern Yellow Pine as a versatile and durable building material are:

High strength – Design values are among the highest of all softwoods. It has earned a reputation as the ‘Supreme Structural Wood of the World’.

Durability – Highly resistant to wear, it is ideally suited for high-traffic applications such as pathways, decks and flooring.

Fastener holding – Its ability to hold nails and other fasteners is among the highest of all softwoods. Drying (or seasoning) further enhances this capability.

Treatability – It has long been a preferred species when pressure treatment with preservatives is required. Its unique cellular structure permits deep, uniform penetration of preservatives, making it one of the few species not requiring incising prior to treatment.



A NATURAL ASSET

Wood has so many cost and construction advantages over other building materials, it's easy to forget what an environmental asset it is. Wood is naturally reusable, recyclable and biodegradable; it's the best insulator of all structural building materials, conserving finite fossil fuel and coal by requiring less energy to heat and cool a home built with wood; it takes far less energy to transform trees into wood products than it does to manufacture steel, aluminum, masonry or plastic products – and less pollution of the air and water, too. And, of course, a growing forest removes carbon dioxide from the atmosphere, while giving off life-sustaining oxygen. Can you think of a better environmental exchange than that?

Ample resources

Southern forests are among the largest and most readily accessible in the world. The growing stock of Southern Yellow Pine has more than doubled since the 1950s; by 2040, it will have increased in volume by about 20% to 120 billion cubic feet (3.4 billion cubic metres).

Stable supply chain

Expanding forests mean long-term confidence in the supply chain. Southern foresters use sustainable forest management practices to guarantee an abundant resource for future generations and to protect the environment.

Strong infrastructure

The US South is a global leader in exporting timber and finished products. Landowners, loggers, foresters and value-added industries create a dynamic and efficient supply chain, with Southern Yellow Pine reaching international markets through a network of Southeastern shipping ports.

Certified wood

Increasing amounts of Southern Yellow Pine forest are being certified by third-party auditing programmes, such as the Sustainable Forestry Initiative, American Tree Farm System and the Forest Stewardship Council. Contact your supplier for details.

Source: *Forests of the South*, Southern Group of State Foresters, southernforests.org

GRADES

Southern Yellow Pine is produced in different grades as well as sizes. Each grade limits certain characteristics such as knots, checks and splits. Grades are assigned by visual inspection of each piece at the mill. For U.S. construction markets, this inspection is more a judgement of the relative strength properties within a piece than of its appearance. For exports, appearance, as well as relative strength properties, is often a deciding factor. Timber exported for appearance is typically shipped rough and is not grade marked.

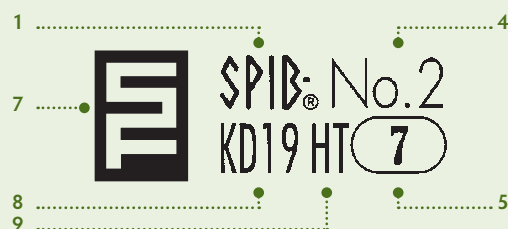
Quality Southern Yellow Pine is graded in accordance with the grading rules of the Southern Pine Inspection Bureau (SPIB). SPIB, Timber Products Inspection, Inc. (TP), Renewable Resource Associates, Inc. (RRA) and other organizations are accredited by American Lumber Standard Committee, Inc. (ALSC) to inspect and grade mark Southern Yellow Pine in accordance with SPIB rules.

The sample photos in this publication show allowable characteristics within each grade, as described in SPIB's 2014 Standard Grading Rules, and SPIB's Export Grading Rules, 1982 Edition, approved by the ALSC, in accordance with Product Standard PS 20. Photographs of dressed and rough timber are shown for each grade. Although not all thicknesses are shown, they are available in the same grades and have a similar appearance.

A complete grade description should be included with any buyer's order, and is considered an agreement between buyer and seller of specific characteristics allowed within each grade purchased.

An authorized grade mark on each piece assures the buyer that the product is manufactured to the correct specification. The inspection agency is identified (SPIB, TP or RRA among others**) along with the grade of the piece, its moisture content, and a mill number identifying the manufacturer.

SFPA members can include the association's logo in the grade mark if they wish to.



1. Inspection Service: Southern Pine Inspection Bureau (SPIB)
2. Inspection Service: Timber Products Inspection, Inc. (TP)
3. Inspection Service: Renewable Resource Associates, Inc. (RRA)
4. Timber Grade
5. Mill Identification Number
6. Timber Species
7. (optional) Logo denoting a member mill of Southern Forest Products Association (SFPA)
8. Moisture Content (MC): Kiln-dried (KD) to a maximum of 19%
9. Heat Treated

**NOTE: Other agencies are accredited by ALSC to inspect and grade all or selected Southern Yellow Pine products according to SPIB Grading Rules, including: California Lumber Inspection Service (CLIS); Northeastern Lumber Manufacturers Association (NELMA); West Coast Lumber Inspection Bureau (WCLIB); and Western Wood Products Association (WWPA).

KILN-DRYING ASSURES DIMENSIONAL STABILITY

The vast majority of Southern Yellow Pine is kiln-dried to a maximum moisture content of 19%. This improves dimensional stability, strength and appearance, minimizes shrinkage in service and is also an accepted method of sterilizing the timber to prevent the transfer of micro-organisms.

Grading rules restrict the moisture content of timber 50mm (2") or less in thickness to a maximum of 19% (KD19). Moisture content restrictions apply at the time of shipment, as well as at the time of dressing.

A certified grade mark is evidence that the Southern Yellow Pine has been properly seasoned and is considered sterilized by most importing countries.

Timber absorbs or loses moisture depending on the surrounding temperature and humidity. Within a typical shipment, Southern Yellow Pine dried to a maximum moisture content of 19% will average 15%, and if dried to a maximum moisture content of 15%, will average 12%. Once kiln-dried shipments are delivered, proper storage is essential to maintain dimensional stability.



DRESSED NO.1

This grade is recommended for general use and construction where high strength, stiffness, and good appearance are desired. Typical uses may include the bottom chord of an engineered truss – where highest strength is required – or for long-span floor joists.

Sample photo

2" x 6" (38mm x 140mm)

Length: 10' (3.048m)



DRESSED NO.2

This is the most commonly available grade, recommended for most general uses where moderately high design values are required.

Sample photo

2" x 6" (38mm x 140mm)

Length: 10' (3.048m)



DRESSED NO.3

This grade is assigned design values to meet a wide range of design requirements. It is recommended for general construction where appearance is not a controlling factor. Many pieces would qualify as No.2 except for a single limiting characteristic. Commonly used for truss webs, or for non-building applications such as pallets, concrete forming, and other industrial uses.

Sample photo

2" x 6" (38mm x 140mm)

Length: 10' (3.048m)



DRESSED NO.4 (ECONOMY)

Dressed, kiln-dried, and manufactured to full dimension sizes in thickness and width. Primarily used for a variety of industrial purposes.

Sample photo

2" x 6" (38mm x 140mm)

Length: 10' (3.048m)



ROUGH SAWN SAPS

Rough sawn, and kiln-dried to a maximum moisture content of 19%, this material measures $\frac{7}{8}$ " x 3" and wider to 3" x 3" and wider. Saps are primarily used in re-saw and re-manufacturing operations to produce items for joinery, mouldings, furniture, panelling, and cladding.

Sample photo

1" x 4" (25mm x 100mm)

Length: 10' (3.048m)

NOTE: Prior to shipment, the buyer and seller should establish what constitutes a complete grade description of this material.



ROUGH SAWN PRIME

Rough sawn and kiln-dried to a maximum moisture content of 19%, this material measures 1½" x 4" and wider, to 4" x 4" and wider. Prime material can be remanufactured into thicker sizes, similar to dimension. It may be suitable for structural uses, such as exposed rafters. It is also ideal for furniture, flooring, and joinery applications.

Sample photo

2" x 8" (50mm x 200mm)

Length: 10' (3.048m)

NOTE: Prior to shipment, the buyer and seller should establish what constitutes a complete grade description of this material.



ROUGH SAWN MERCHANTABLE

This material is suitable for re-manufacturing operations requiring finished material of large sizes.

Sample photo

2"x 8" (50mm x 200mm)
Length: 10' (3.048m)



ROUGH SAWN NO.2

Rough sawn, kiln-dried, and
manufactured to full dimension
sizes in thickness and width.

Sample photo

2"x 6" (50mm x 150mm)

Length: 10' (3.048m)



BOARDS

Boards are classified as having a thickness of 1" to 1½" and a width of 2" or more. This material, surfaced four sides (S4S), is available in a wide range of sizes and grades to suit most requirements for utility, economy or appearance. Uses include shelving, packaging and formwork. Boards may also be re-manufactured into a variety of patterns.

Dressed thickness will vary by manufacturer, with ¾" (19mm) and 1" (25mm) the most common. Boards specified as 1" have an actual thickness of ¾"; those specified as 5⁄4" have an actual thickness of 1". Nominal standard widths range from 2" (50mm) to 12" (305mm). Lengths range from 8' (2.44m) to 16' (4.88m).

C&Btr Grade

This is most commonly specified for optimum appearance and a high quality finish. Flooring grades are based on appearance criteria, limiting defects such as tight knots, splits or wane.



No.2 Grade

1"x 6" (19mm x 150mm) Boards

For general purpose uses, such as sheathing, fencing, packaging and shelving.



RADIUS EDGE DECKING (R.E.D.)

This material is available in two grades: **Premium** and **Standard**. Premium offers better appearance characteristics. It features a rounded surface on all four edges; the rounding is on a radius of $\frac{1}{4}$ " or 6.35mm. The dressed thickness is 1" or 25mm in all widths. Typically, this product is pressure-treated with a waterborne preservative for outdoor deck surfaces, planters, benches and steps.

Sample photo

$\frac{5}{4}$ " x 6"

(25mm x 140mm)

Length: 10' (3.048m)

Pressure treated
with a waterborne
preservative.

NOTE: This product
is graded according to
SPIB's Special Product
Rules for Radius Edge
Decking, 1986 Edition.

The product designation
"R.E.D." is included within
the certified grade mark.

TP®STAND. S-DRY
000 R.E.D. SYP

SPIB® PREMIUM
R.E.D. KD 15 (7)

Premium Grade



Standard Grade





Copyright © 2018 Southern Forest Products Association. All rights reserved.



AmericanSoftwoods.com
SouthernPineGlobal.com