





Leading suppliers for construction chemicals, Waterproofing products, Architectural finishing and solutions



Since 1991



Since 2019



### THERMOWOOD - الخشب الطبيعي المعالج حرارياً

Thermally treated natural hardwoods & softwood - origin: Finland & Turkey



### LIMESTONE - الأحجار الجيرية الطبيعية

Natural limestone, luxurious cosumizable solutions - origin: Spain & Portugal



### HARDSCAPE STONES & PRODCUTS - الأحجار الطبيعية المختلفة للمساحات الخارجية

Natural stones for outdoor enviroments - origin: Spain & Greece



### GRANITE, QUARTZ, ONYX & MARBLE - الرخام، القرانييت، الكوارتزاييت، والاونكس الطبيعي

Natural exclusive & exotic stones - origin: Spain, Italy & around the world



### TERRACOTTA - التيراكوتا الطبيعي

Clay terracotta for cladding, flooring & artisanal elements - origin: Italy



### TERRAZZO - التيرازو

Cement & resin based marble terrazzo, in addition to exclusive decor mosaic terrazo - origin: Italy



### DECORTAIVE GLASS & MIRRORS - المرايا والزجاج الديكوري

Handmade, artisan, patented artworks in glass for interiors - origin: Italy

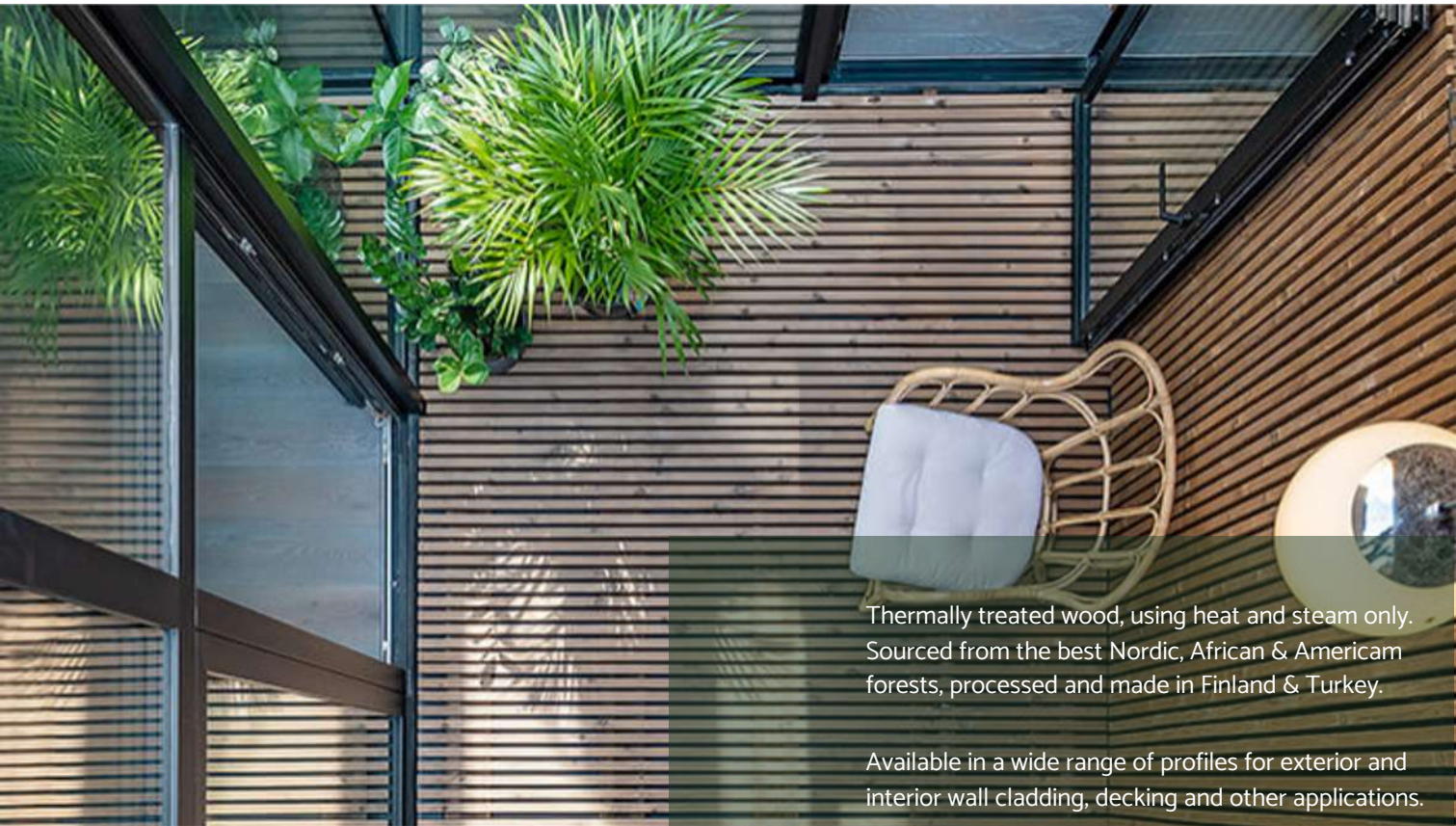


### PORCELAIN - البورسلين

high quality tiles collections -porcelain, cement & terracotta - origin: Spain

- مخصصة للمشاريع: خدماتنا تقدم حسب متطلبات مشاريع عملائنا المهندسين المعماريين، المصممين، ملاك المشاريع والمقاولين.
- نقدم الدعم الفني من مراحل التصميم الأولى خطوة بخطوة.
- نوفر مواد ذات جودة نوعية بمستندات داعمة لوصف المنتجات وجودتها، واختبارات المنتج والشهادات البيئية المطابقة لمواصفات أفضل المشاريع.
- ندعم في توصيف المشاريع، وتقديم المقترحات الفنية المناسبة، ودعم عملائنا في تسليم متطلبات المشاريع.
- نقدم الموارد المساعدة للمصممين (أفكار، صور، عينات، مكتبة 3D).
- دراسات المواصفات والكميات لتقديم أفضل العروض الفنية وعروض الأسعار.
- الدعم الفني اللازم لطرق التركيب الأفضل للمواد حسب حالة المشروع، وإيصالكم بأفضل المقاولين المتخصصين في مرحلة تركيب المواد المختلفة.

- Project base : our service is tailored to professional architects, designers, project owners and contractors needs.
- Technical support and recommendations from early design stage.
- Materials certificates, data sheets, info and high enviromental standards for best quality projects.
- Materials specifications support and technical proposals and submittals.
- Design support resources (inspirations, proposals, samples, 3D libraries).
- BOQ reviews & commercial studies.
- Installation manuals and specialized contractor recommendations.



Thermally treated wood, using heat and steam only.  
Sourced from the best Nordic, African & American  
forests, processed and made in Finland & Turkey.

Available in a wide range of profiles for exterior and  
interior wall cladding, decking and other applications.



# THERMOWOOD





## Selection of the Best Raw Material

Best raw material, carefully chosen top grade swan timber (sound knotted) from eco certified **Scandinavian Pine & Spruce** forests, **American Ash** forests & **African Iroko**.

## Thermal Modifications Process

Highly advanced and professioned thermal treatment process, using heat and steam only. Slightly vary for each type of timber. heating the wood permanently changes its chemical and physical qualities to be more durable & weather resistance

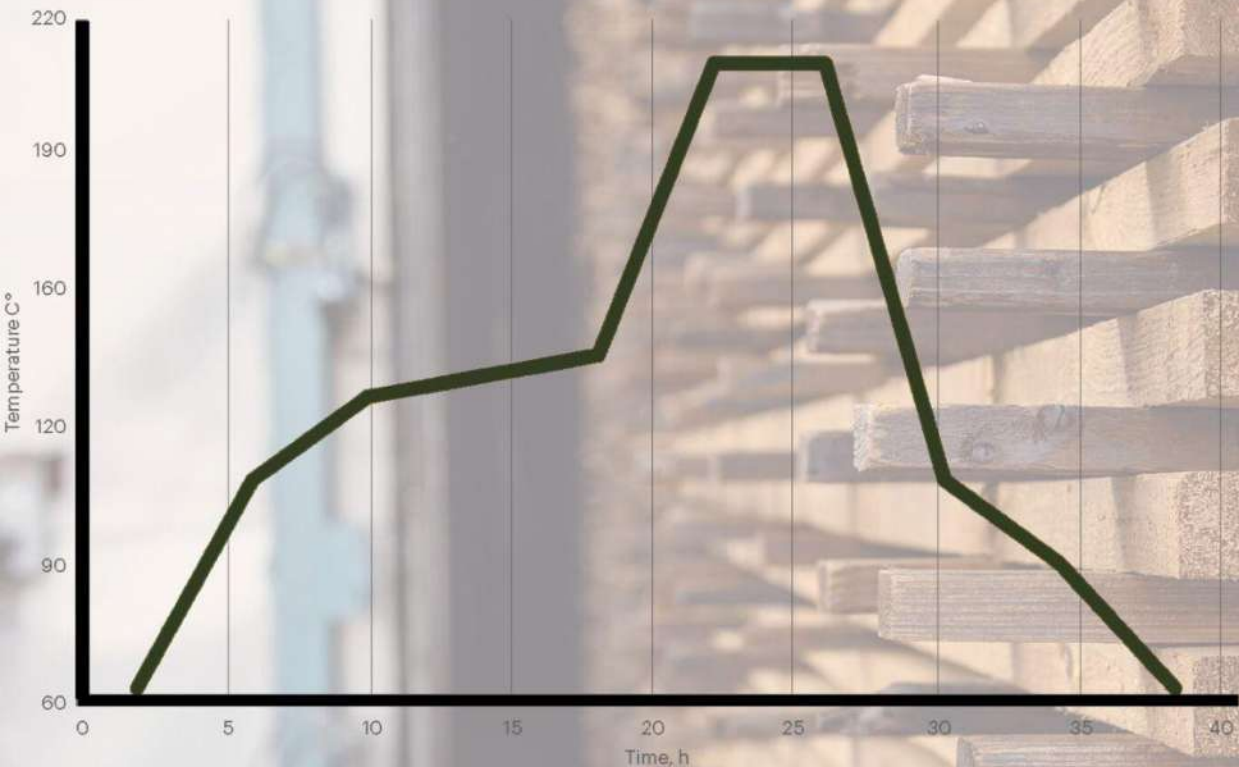


## Quality & Certification

Quality certificates and labels



# THERMO TREATMENT PROCESS



## PHASE 1: SLOW TEMPERATURE RISE

- Material dried to a moisture content nearly zero
- Controlled temperature rise 190–212 C°
- Steam to prevent cracking and burning of the wood

## PHASE 2: THERMAL MODIFICATION

- Chemical and physical changes mainly due to thermic degrading of hemicelluloses

## PHASE 3: SLOW COOLING AND MOISTURE ADJUSTMENT

- Lowering the temperature by using water spray systems
- Adjusting the moisture content to the level 4–7%

## NEW IN THERMOWOOD

### THERMO HARD WOOD: ASH

- **HARDWOOD, SOURCE:  
NORTH AMERICA**
- **THERMO-TREATMENT**
- **DARK BROWN COLOR**
- **HIGH NUMBER OF GRANIS,  
WAVY ASTHETIC TEXTURE**
- **HIGH DURABILITY**  
Brinell Hardness 30.5 N/mm<sup>2</sup>.
- **595-629 kg/m<sup>3</sup> DENSITY,  
BARE HEAVY LOADS**





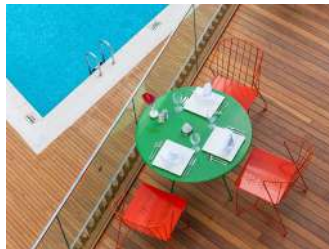


**MATERIALUX**  
Thermowood

## NEW IN THERMOWOOD

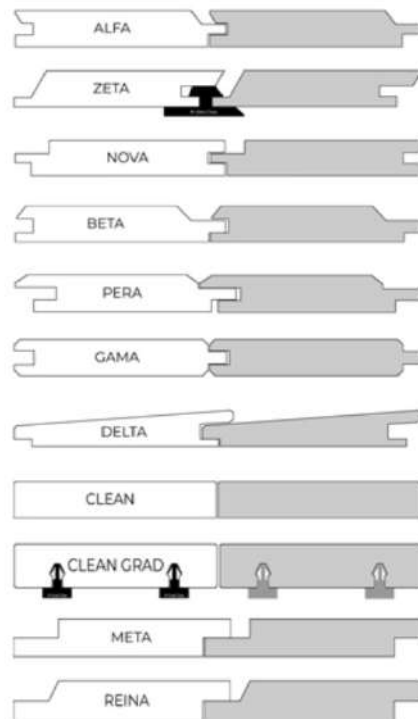
### THERMO HARD WOOD: IROKO

- **HARDWOOD, SOURCE: AFRICA**
- **THERMO-TREATMENT**
- **HONEY COLOR**
- **TOUGH & TENSE**
- **HIGH DURABILITY**  
Brinell Hardness 40 N/mm<sup>2</sup>.
- **576-650 kg/m<sup>3</sup> DENSITY,**  
**BARE HEAVY LOADS**



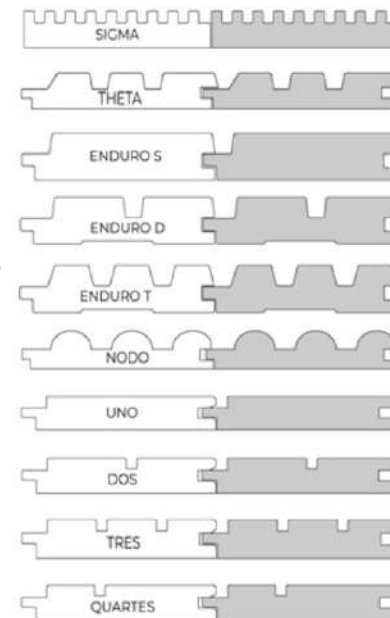
## Product range (cladding profiles):

### Standard range



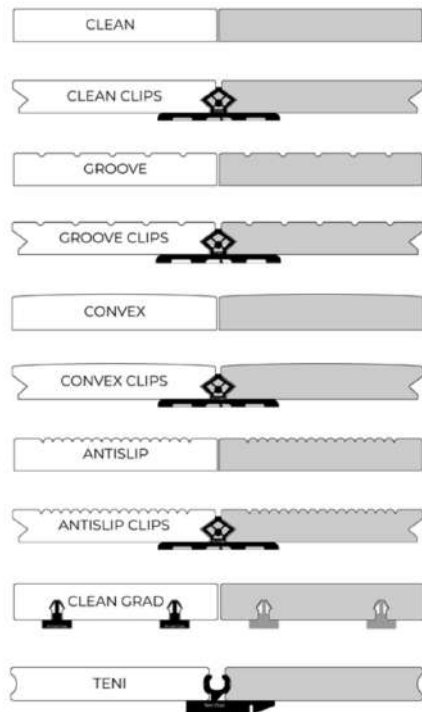
### hardwood: ash & iroko

### 3D range



## Product range (decking profiles):

### Profiles



## hardwood: ash & iroko

Pi Clips



Pi Teni



Pi -2 Clips



Pi Takoz



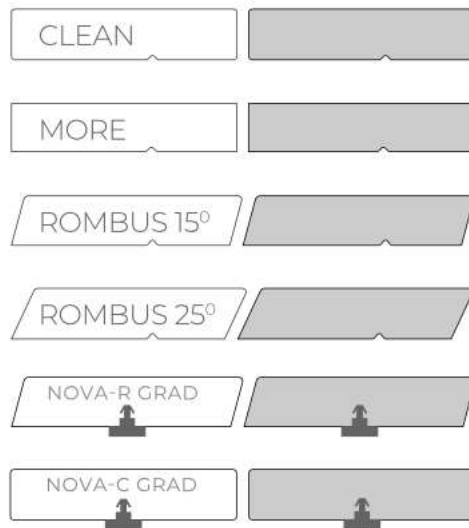
### Fixing clips & systems

Grad Fixing System



## Product range (frames / bearers / solar shades / posts profiles / beams): hardwood: ash & iroko

### Profiles



### Grad Fixing System





## Product range (cladding profiles):

softwood: pine & spruce



**PANEL SYSTEM**  
Interior / exterior cladding



**Profile:**  
**Panel system 19x117**





Layer  
interior / exterior cladding



**Profile:**  
**Layer 19x188** brushed surface

**Vivo**  
interior / exterior cladding

Almajdiah 139  
Riyadh, Saudi Arabia



**Profile:**  
**Luna Vivo 19 x 188**





**Vivo**  
interior / exterior cladding

Private villa gates  
Riyadh, Saudi Arabia



**Profile:**  
**Luna Vivo 19 x 188**



**FEMMA**  
interior / exterior cladding



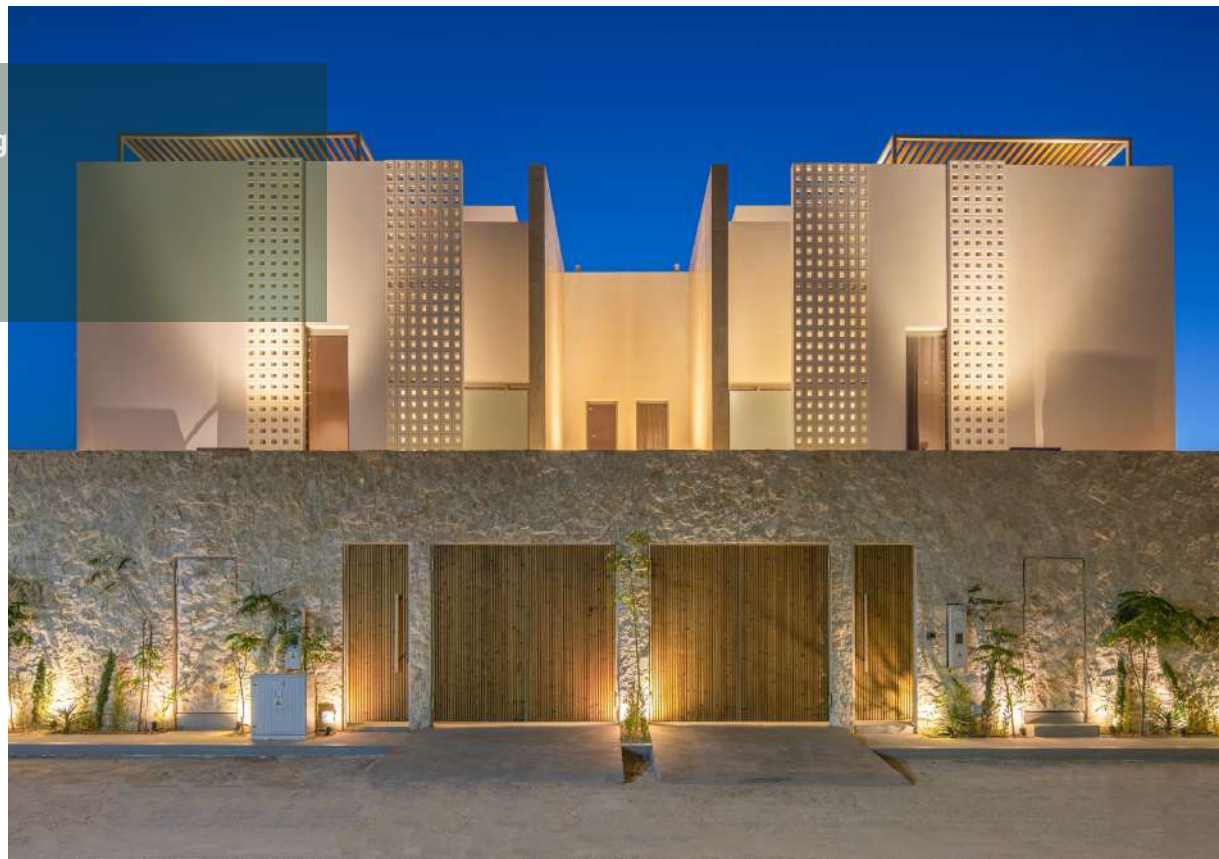
**Profile:**  
**Femma 26 x 142**

**TRIPLE SHADOW**  
interior / exterior cladding

Aura Villas  
Riyadh, Saudi Arabia



**Profile:**  
**Triple Shadow 32 x 140**





**TRIPLE SHADOW**  
interior / exterior cladding

Ministry of Education – Auditorium  
Alula, Saudi Arabia



**Profile:**  
**Triple Shadow 32 x 140**





**TRIPLE SHADOW**  
interior / exterior cladding

Private apartment  
Riyadh, Saudi Arabia



**Profile:**  
**Triple Shadow 32 x 140**





**AALTO**  
interior / exterior cladding



**Profile:**  
**Aalto 32 x 140**



**AALTO**  
interior / exterior cladding

Almajdiah 139  
Riyadh, Saudi Arabia



**Profile:**  
**Aalto 32 x 140**

## Product range (decking profiles):

**softwood: pine & spruce**



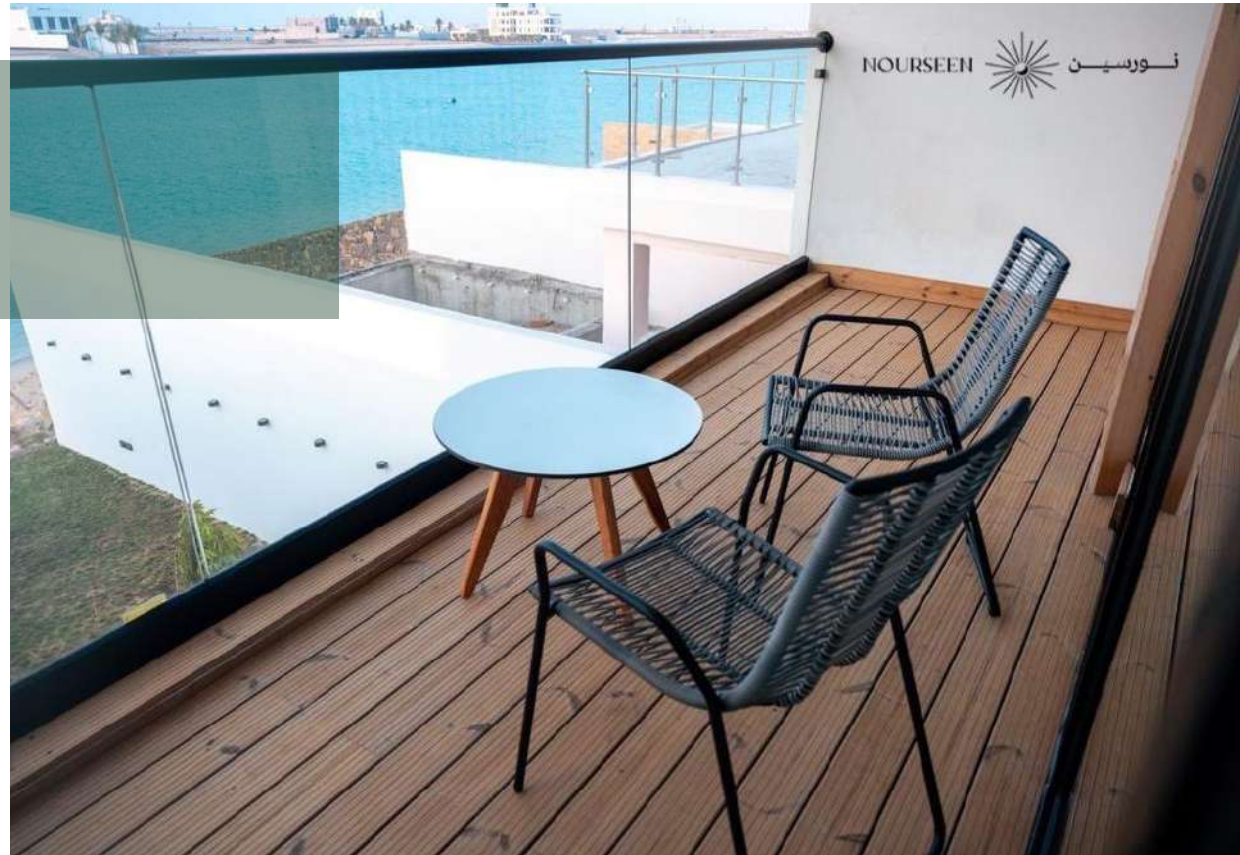


**DECKING 2 PF2**  
Exterior decking

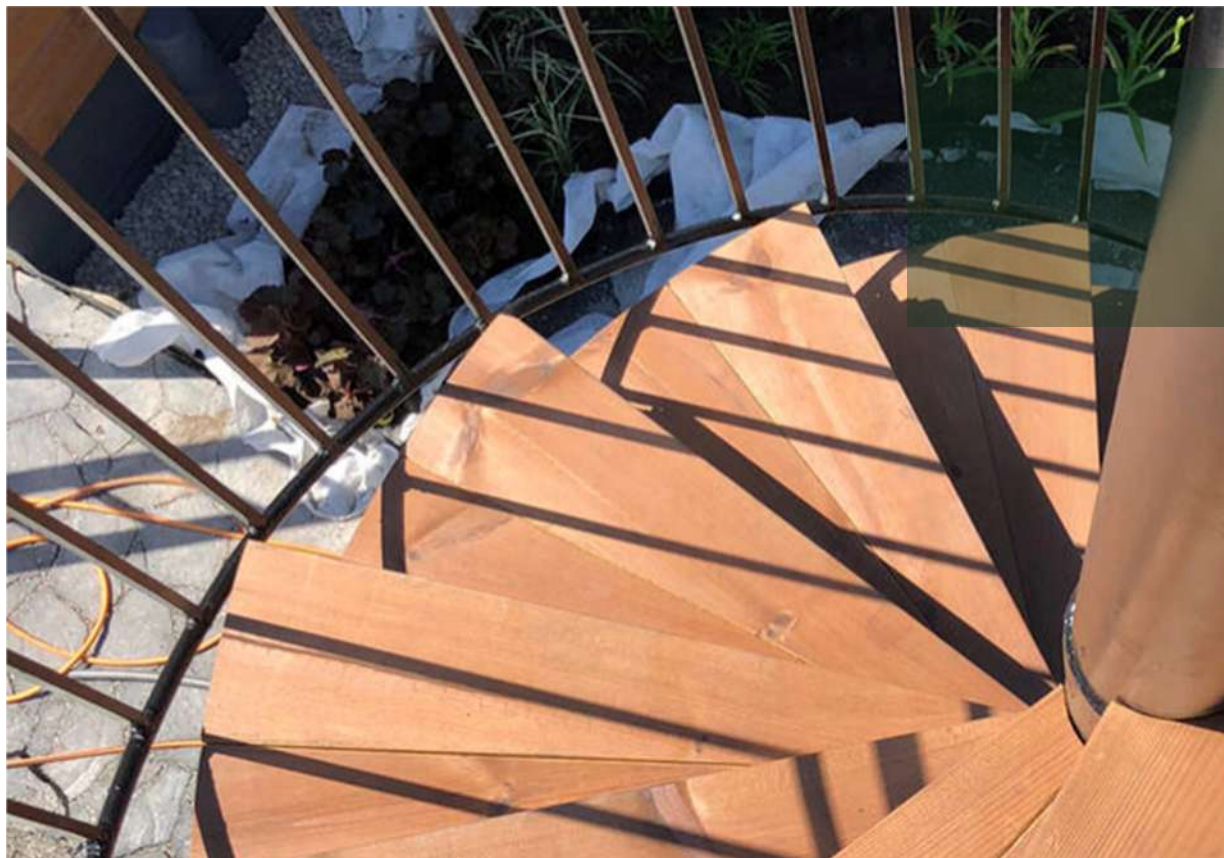
Nourseen Beach Villa  
Jeddah, Saudi Arabia



**Profile:**  
**Deck 2 Profix 2 26 x 117**



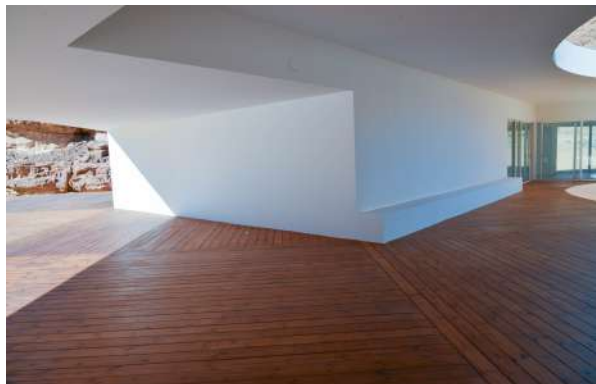




Decking PF 3  
exterior decking



**Profile:**  
**SHP Profix 3 32 x 116 SAP**  
brushed surface



**Decking SHP42x140**  
exterior decking

Dessert X Visitor's Centre  
Alula, Saudi Arabia



**Profile:**  
**SHP 42 x 140**

## Product range (frames / bearers / solar shades / posts profiles / beams): softwood: pine & spruce





Batten profile  
frames and bearers



**Profile:**  
**Post 140 x 140 - glued**





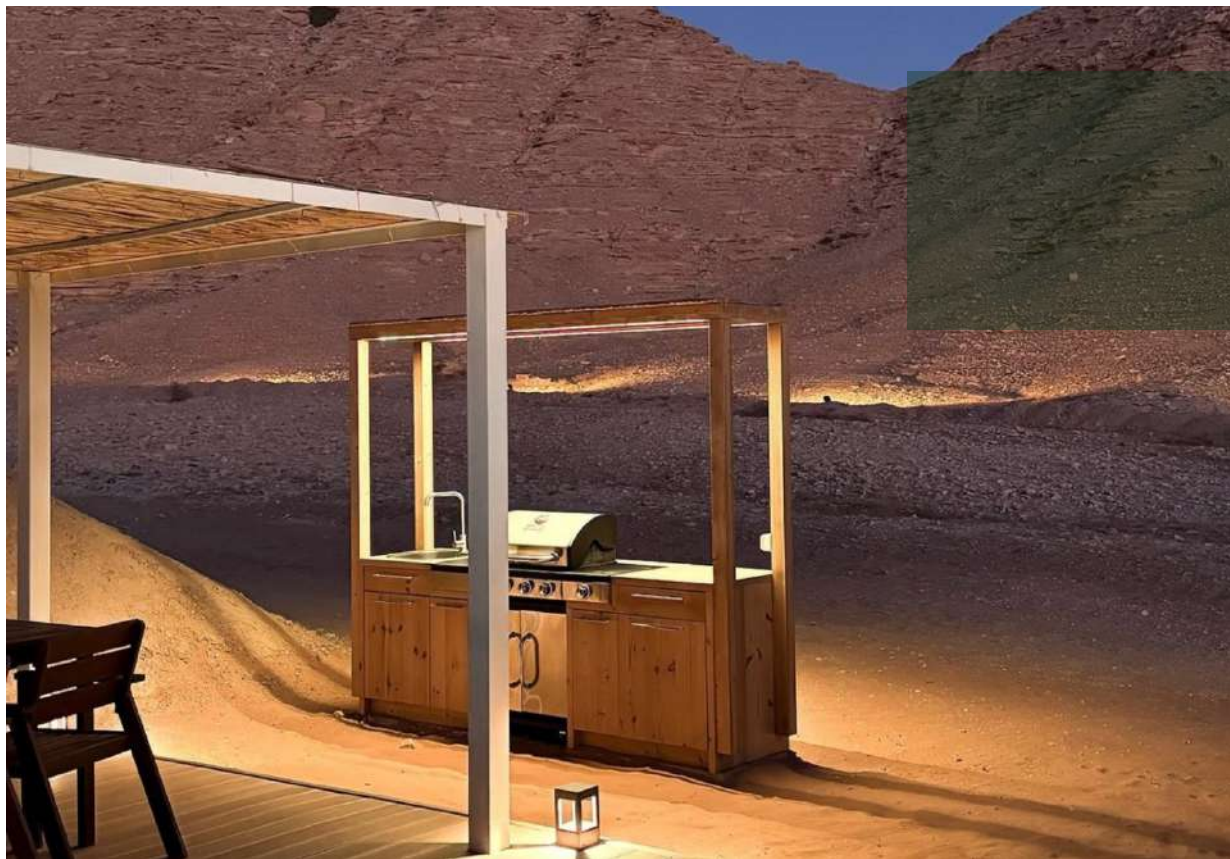
**Batten profile**  
interior / exterior

Tomoor Alula  
Alula, Saudi Arabia



**Profile:**  
Post 88 x88 - glued





**Batten profile**  
interior / exterior

Pauseaway resort bbq  
Riyadh, Saudi Arabia



**Profile:**  
**Post 88 x88 - glued**

Batten profile  
interior / exterior



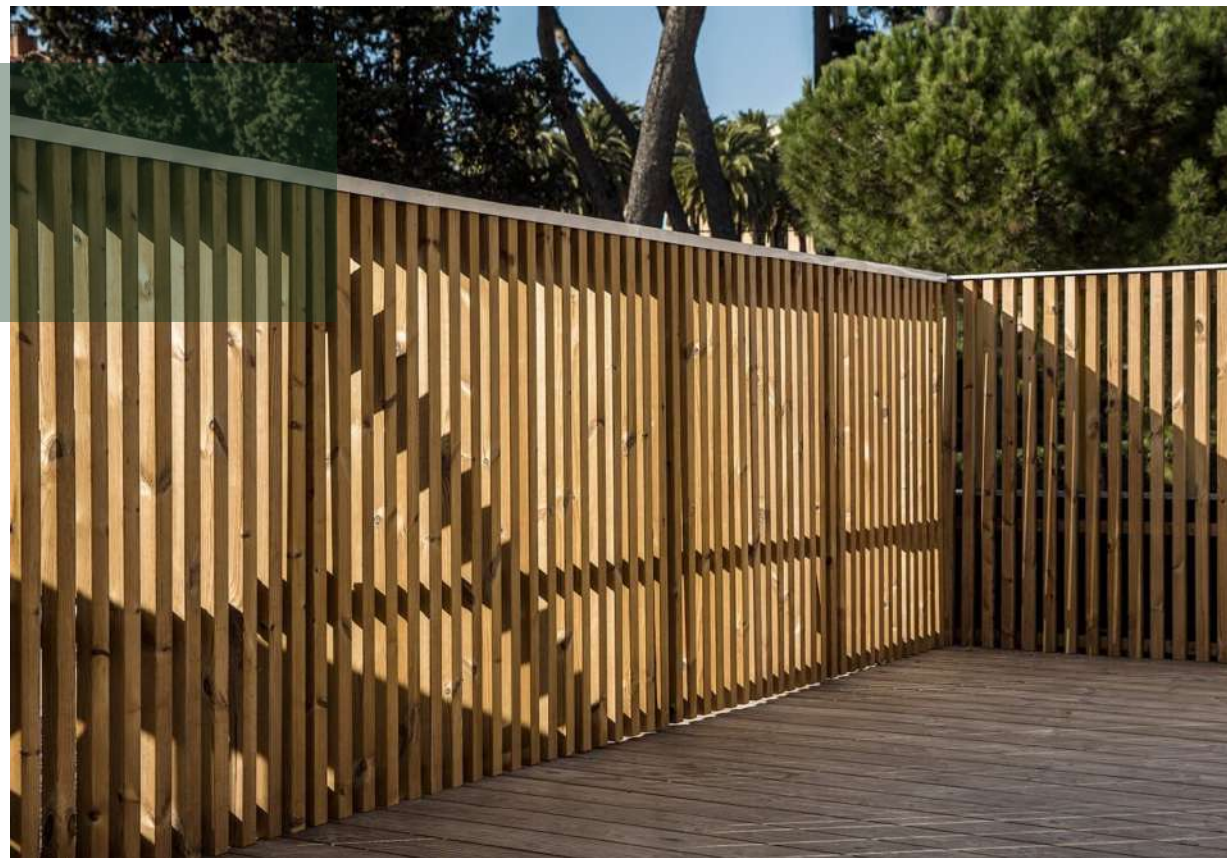
Profile:  
SHP 42 x42



**Batten profile**  
interior / exterior



**Profile:**  
**SHP 42 x 68**





**Batten profile**  
interior / exterior



**Profile:**  
SHP 42 x 92





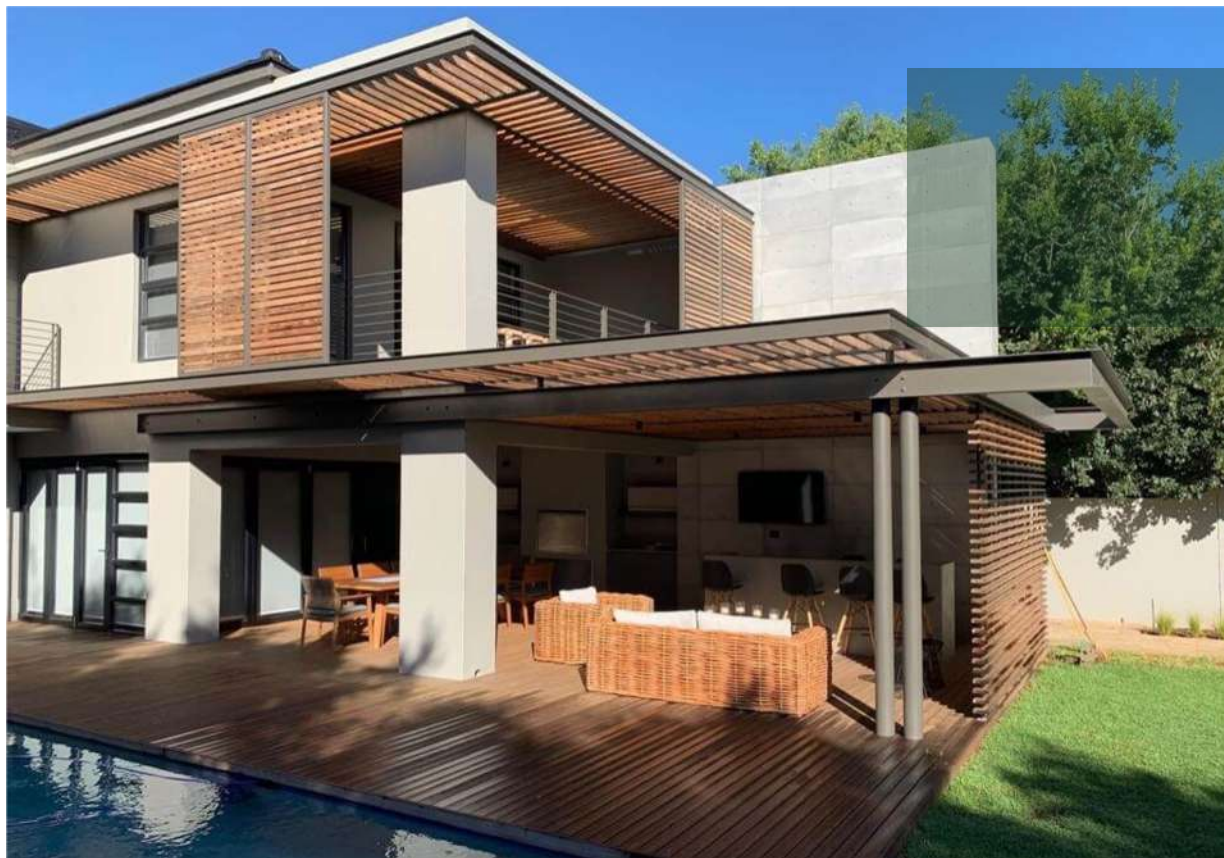


**Batten profile**  
interior / exterior

Dessert signage  
Dubai, UAE



**Profile:**  
SHP 40 x 185



**Batten profile**  
interior / exterior



**Profile:**  
**SSS 26 x 68**

**Batten profile**  
interior / exterior



**Profile:**  
**SHP 42 x 140**





**Batten profile**  
interior / exterior

Artwork  
Riyadh, Saudi Arabia



**Profile:**  
**SHP 40x185**





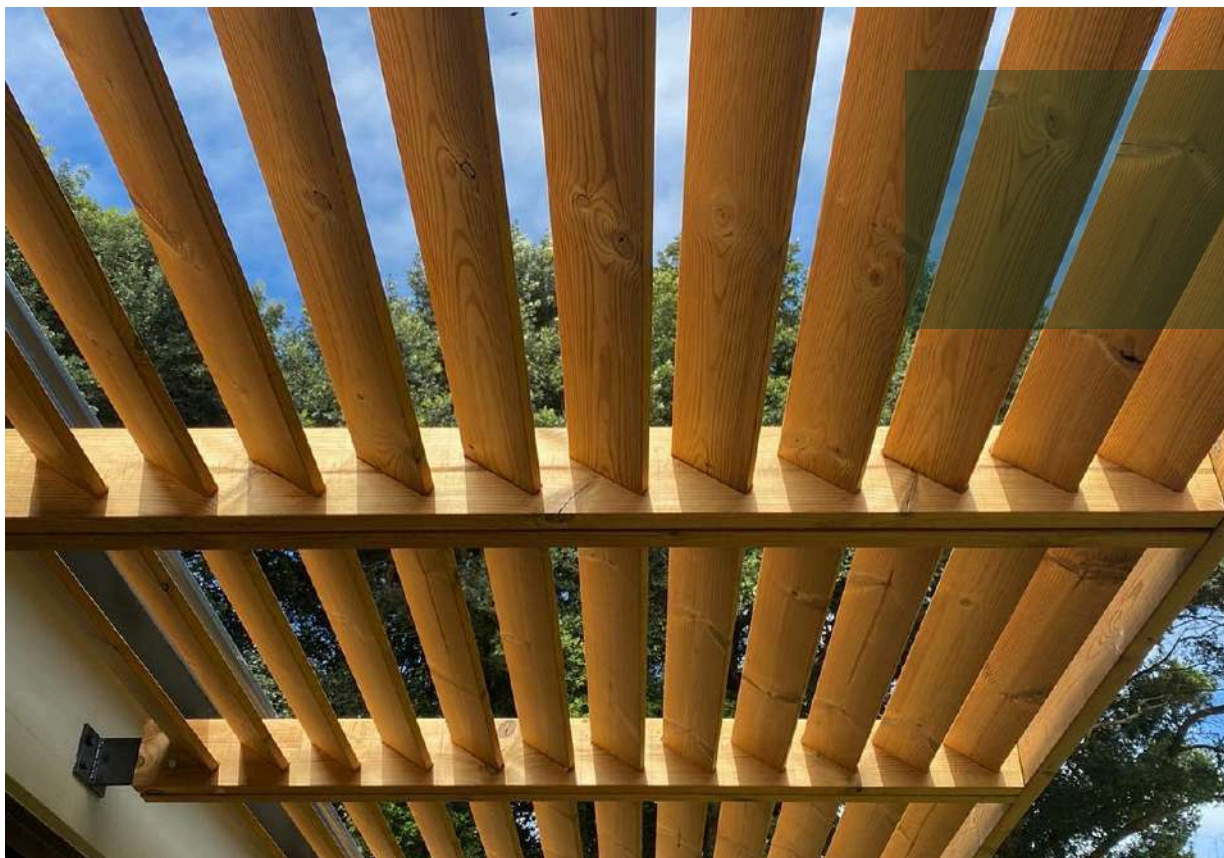
**Batten profile**  
interior / exterior

Artwork – Alwaal Albarri Cafe  
Riyadh, Saudi Arabia



**Profile:**  
**SHP 40x185**





**Batten profile**  
interior / exterior



**Profile:**  
SHP 19 x 140



**Batten profile**  
interior / exterior

Private Villa Pool Terrace  
Jeddah, UAE



**Profile:**  
**SHP 19 x 140**



## TECHNICAL



### **DIMENSIONALLY STABLE**

Significantly improved dimensional stability. Lunawood retains its original shape better than untreated wood.



### **LOW MAINTENANCE**

Lunawood does not require surface treatment in any climate. When left untreated, it gradually develops a beautiful silver colour.



### **FOR ALL CLIMATES**

Proven to work well, even in the most challenging climates. Does not react to changes in humidity.

## FUNCTIONAL



### **HEALTHY**

Lunawood on decorative surfaces increases comfort and improves wellbeing. The physiological and psychological effects of wood on humans are undeniable.



### **CERTIFIED QUALITY**

Patented non-toxic production method for producing ThermoWood®. Continuous quality control audited by a third party to ensure a long life cycle.



### **PLEASANT FEATURES**

Delight to all of the senses: feel, appearance and scent are sophisticated yet natural.

## SUSTAINABLE



### **SUSTAINABLE THROUGHOUT**

Certified Nordic raw material from nearby forests. Lunawood acts as a carbon storage and is 100% recyclable.



### **PURE MATERIAL**

Truly natural product with no chemicals. No harmful indoor air emissions or resin leakage, even at the highest temperatures.



### **NORDIC**

Designed and made in Finland. The Nordic approach extends to architecture and the way we do business.



# Thank You

MATERIALUX

☎ 6223 Ahmad Al Attas, Al Zahra, Jeddah 23521 ☎ +966 12 652 0820 ☎ +966 55 002 3977  
☎ 2339 Anas Ibn Malik, Alyasmin, Riyadh 13322 ☎ +966 11 481 0007 ☎ +966 55 297 7753

📺 📧 📧 fiangroup 📧 info@fiangroup.com 📧 www.fiangroup.com

## STAY CONNECTED